



Outdoor Garden Furniture Aluminum Automatic Roof Aluminum Louvered Pergola For Mansions

Our Product Introduction

for more products please visit us on awning-pergola.com

Basic Information

- Place of Origin: Guangdong China
- Brand Name: Oasis
- Certification: CE ROHS
- Model Number: V22
- Minimum Order Quantity: 1 set
- Price: USD 871 USD ~4000USD or more based on the sizes
- Packaging Details: Cardboard Rigid Carton With Plywood at outside to consolidate
- Delivery Time: 7~12days for the samples ,30 days for the official orders
- Payment Terms: T/T
- Supply Ability: 5000 Square Meter/Square Meters per Month



Product Specification

- Material: Aluminium Alloy 6063-T5
- Colour: Dark Grey /White/Custom Made Colour
- Frame Finishing: Powder Coating
- Feature: Eco-friendly ,Easy Assembly ,Sustainable ,Rodent Proof ,Waterproof ,Renewable Source
- Product Name: Aluminium Louver Blade Pergola
- Application: Garden/Backyard/Supermarket /Mansions/Buildings/Balcony/Swimming Pool/House
- Function: 100%Waterproof /Sunshade
- Type: Heavy Duty Type /Motorized And Adjustable
- Warranty: 1 Year Warranty And Maintenance For The Whole Set ,2 Years Warranty And Maintenance For The Motors
- Guarantee: 10 Years Still Good Quality As For The Aluminium Strong Materials

Product Description

Outdoor Garden Furniture Aluminum Automatic Roof Aluminum Louvered Pergola For Mansions

Product Specification			
Product Name	Aluminium louver blade pergola	Product Features	Waterproof outdoor roof system/Drainage system
Materials	Aluminium Alloy-6063T5	Aluminium Louver blade	180*43mm*1.6mm
Aluminium Post	150*150mm *2.5mm	Aluminium Gutter	123*170mm*2.1mm
Angle Adjustable	0~100dgrees	Frame Colour	Dark Grey ,White /Custom made
Application	Outdoor ,balcony ,garden ,backyard,mansions ,buildings,courtyard	Warranty	1 year for the whole set ,2 years for the motor
Aluminium Thickness	1.6mm~2.1mm	Frame Finishing	Powder Coating
Size:	400*300*2800mm 400*400*2800mm 4000*5000*2800mm 4000*6000*2800mm 4000*8000*2800mm		
Operation	Either motorized with the remote control or manual with hand crank		
Power component	Dooya Motor ,A-motor(CE ,ROHS ,TUV ,UL,SGS)or gear box & hand cank (manual)		

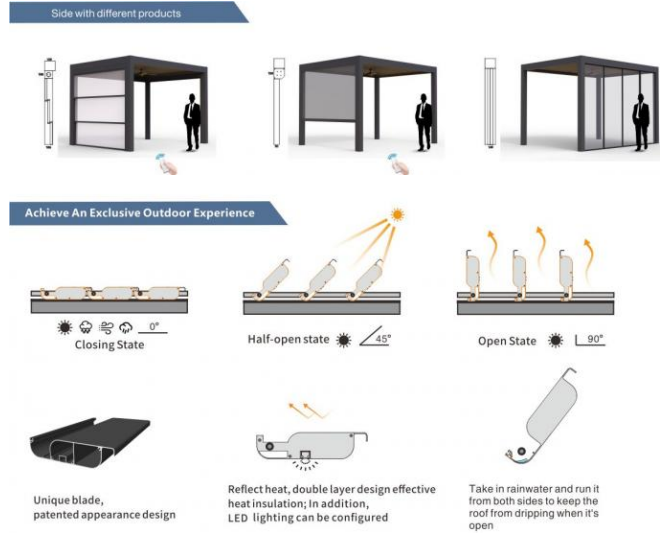
Our Product Introduction

Features:

- 1.All Aluminium Alloy louver materials for the products
- 2.Patented leading technology all full sealed for the products in the markets ,Patented Products
- 3.Wind-resistant ,Waterproof ,sun shading and heat insulation ,ventilating
- 4.Closed ,half-open,fully-open for the louver blades of the pergolas
- 5.Hidden Led lights:Soft LED lights are hidden into the blades ,not dazzling ,remote control for the lights,perfecting the night .
- 6.Hidden drainage system : Louver blade pergola has good hidden drainage system ,water goes into the the hidden blade gutters in the roof ,flow into the side gutters and the posts ,outlets in the bottom of the posts
- 7.Fully sealed rubber strips built in all sides of the louver blade ,EPDM Raw Materials
- 8.Assembly ways : Independent installation ,Mount the side against the wall ,Splice Installation

Advantages of our products Louver blade pergolas

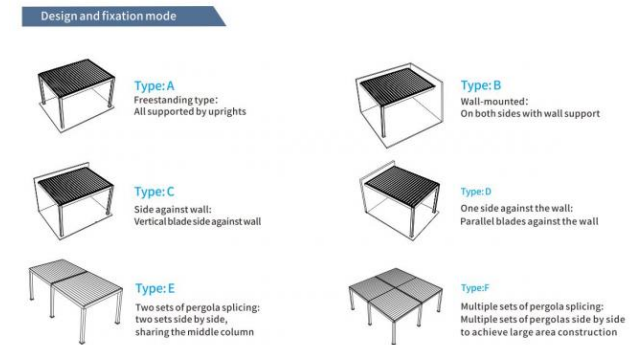
1.This Design of Louver blade of the pergolas :It is with the best force to hold ,it is very strong,also force bearing is very good ,so the louver blade is with the best quality ,not easy to get broken or transform,with the best safety for a lot of real estate ,home decoration projects and so on ! We use all aluminium alloy 6063T5 Aluminium for the materials of the louver blade ,posts ,gutter ,best result and the best quality for the outdoor real estate ,buildings ,home decoration projects and so on ,with the best safety advantages . Our products are with the patents from China Intellectual Property Administration ,also with a lot of certifications of honor.Our products are patented ,which means that our products mould belongs to us ,we have the copyrights of the products ,our products are with our own good thoughts of our designers ,the design is very professional ,reasonable ,scientific ,with the best quality !



2.Fully Sealed Rubber with the best protection function : The Louver blade Fully Sealed,this technology is all patented ,we can make a difference to bring you the best result for the waterproof ,best protection against the rain.Furthermore, we use 150x150mm big post 2.5mm and 123x170mm 2.1mm big gutter,thicker materials, it can process a rainfall with more than an intensity of 0.04 to 0.05 l/s/m², drain out the heavy rain quickly. Fully Sealed Design can make sure of the best quality for the protection from the rain ,inside the pergolas ,with the all aluminium accessories ,it is gonna be with the best advantages ,it is with the best quality ,not able ,not easy to get rusted ,get corrosive .



3.Installation Methods



4.Technical Parameters

Technical Parameters

Frame material:	6063-T6 aluminum alloy extrusion
Screen size:	220mm wide, effective waterproof design
Louver material and function:	6063T6 UV resistance, snow resistance, pressure resistance
Motor:	Domestic motor
General voltage:	220V General (special custom)
Control mode:	Remote control
Rotation Angle:	0°C~90°C, press and stop
Dimension:	Length direction: L≤6m Width direction ≤6m
Color:	Sky Grey
Surface treatment:	Powder spray Anodizing

5. Your Best Choice

More Comfortable Outdoor Living Experience

Warm: As warm as you want
Light: As much light as you want
Summer: On a summer's day

Sun-shading, Ventilate, Temperature Regulation

Rain-proof, Wind-proof, Snow-proof

1. Fully vented design, breeze can flow
2. The reinforced structure resists strong winds of force 12 grade, 15
3. Thickened profiles withstand snow pressure

Your pleasure Your choice

You can customize your ventilated Eco-room, you can choose different functions integrated into the system as lighting system, sound system, heater, side closure, optional (lifting window, glass sliding door, screens, etc.)

Lighting, Motor, Loudspeaker, Lifting Window, Sliding door, Screen

6. Tips of The Products

European architectural engineers consider Outdoor aluminium louvered blade motorized pergolas in their designs for several reasons.

Firstly, energy efficiency is a key concern in European building design. These pergolas help regulate the amount of sunlight entering a building, reducing the need for excessive artificial cooling or heating and thus contributing to lower energy consumption. The aesthetic appeal aligns with the diverse architectural styles found in Europe. The modern and sleek design of the aluminium pergolas can complement both traditional and contemporary buildings, adding a unique and stylish element to the overall facade. They offer flexibility in design. The motorized louvered blades can be adjusted to control the amount of light and ventilation, allowing architects to create dynamic and adaptable outdoor spaces that meet the changing needs of occupants. European climates can be quite variable, and these pergolas provide protection from rain, wind, and intense sunlight, making outdoor areas more usable throughout the year. They also contribute to sustainable design principles. Aluminium is a recyclable material, and the motorized functionality can be integrated with smart home systems for efficient operation and energy management. For instance, in a historic city center, an Outdoor aluminium louvered blade motorized pergola can be incorporated into a renovation project to add modern functionality while respecting the building's heritage. In summary, the combination of energy efficiency, aesthetic compatibility, design flexibility, climate adaptability, and sustainability makes Outdoor aluminium louvered blade motorized pergolas an attractive option for European architectural engineers.

FAQ

Q1. Are you trading company or manufacturer?

A: We are a manufacturer specializing in the field of outdoor electric louver blade pergolas, full cassette awnings, retractable awnings, carports, custom made awnings for 27 years!

Q2. What is your warranty and maintenance for the products ?

A: 1 year warranty for the whole set products, 2 years warranty for the motors.

Q3. What is the delivery time for the orders ?

A: 7~15 days upon the receipt of full payment for the sample orders
30~45 days upon the receipt of full payment for the official large quantity orders

Q4. How can I install the pergolas and awnings products in my country?

A: We send you the instruction files of the installation for the pergolas and awnings

Q5. What terms of payment you usually use?

A: T/T 30% deposit and 70% before shipment, Western Union, L/C at sight.

**Rain or Shine, Cold or Hot!
Our Pergolas Are As Firm As Rock!
We can make a difference !
We can bring you something New something Different !
We can provide you the best solutions for the outdoor awnings!**

Guangzhou Royal Awning Co;Ltd



Guangzhou Royal Awning Co., Ltd.

86-18924187823

Royalawning@163.com

awning-pergola.com

No.3 Haijin Road ,Lanhe Town ,Nansha District ,Guangzhou Guangdong, China